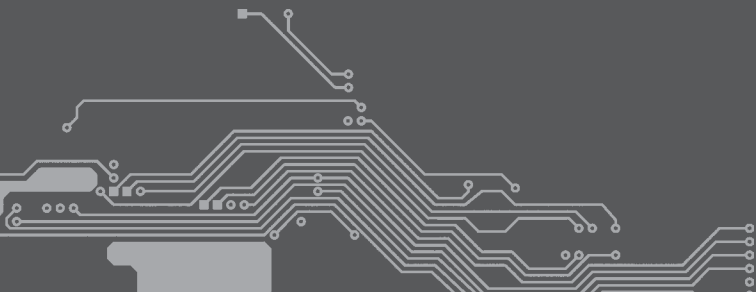




The difference for
your electronics

hapro.



No matter how advanced your electronics are, the real difference will be in the people who make them.

At Hapro we believe in close cooperation with our customers. We also believe that the best results can only be achieved by adopting the right attitude – an approach that has made us one of northern Europe's leading EMS companies in the field of professional electronics.



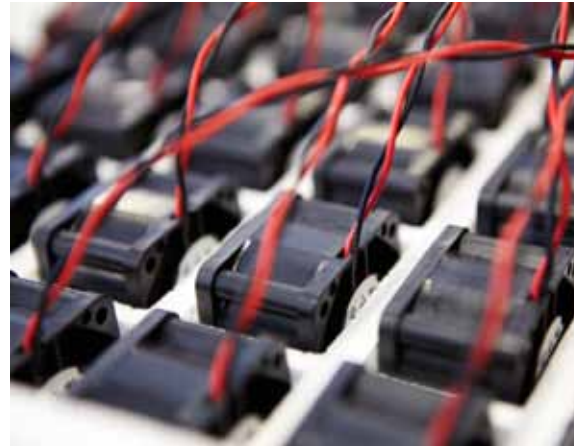
- Founded in 1973
- 550 Employees
- 18 500 sq.m
- IPC-certified employees
- 45 min. from Oslo Airport
- \$140 million in sales

We exceed our customers' expectations

Hapro is perfectly geared to meet demanding needs for the specialised production of high-quality and complex electronics.

Modern facilities and in-house systems together with the expertise of the company's staff mean that Hapro is able to fulfil customer expectations in a demanding business sector.

Hapro offers services to its customers in a wide range of industries including: telecom, offshore, defence and environmental applications.



Quality

When it comes to quality there is no compromise. At Hapro we have implemented a quality management system that defines our quality policy and our objective of meeting customer requirements.

Through cultivating the right attitude, we continuously work to strengthen an already well-established quality culture. Operators are trained to perform specific tasks and are certified according to industrial standards.



Certificates



Hapro is certified by Det norske Veritas according to ISO 9001: 2008 and ISO 14001: 2004



Lean Manufacturing

At Hapro we work continuously with Lean Management and Lean Manufacturing. Our goal is to reduce non-value-added activities and to streamline our manufacturing facility and processes. This improvement work results in increased participation and wellbeing for our employees.

Supply Chain

We at Hapro know that our customers have different needs. Our logistics menu has been created to provide our customers with flexible, responsive, scalable and global logistics solutions that meet their demands.

Our logistics team specialises in supply chain design and management. This includes global sourcing, material management and logistics that are tailor-made for our customers.

The purchasing and planning teams focus on specific customer requirements, implementing schedule changes and ECOs quickly and efficiently.

Our extensive industrial know-how and committed workforce have allowed us to establish cost-effective routines based on forecasts, orders, batch production and call-offs.

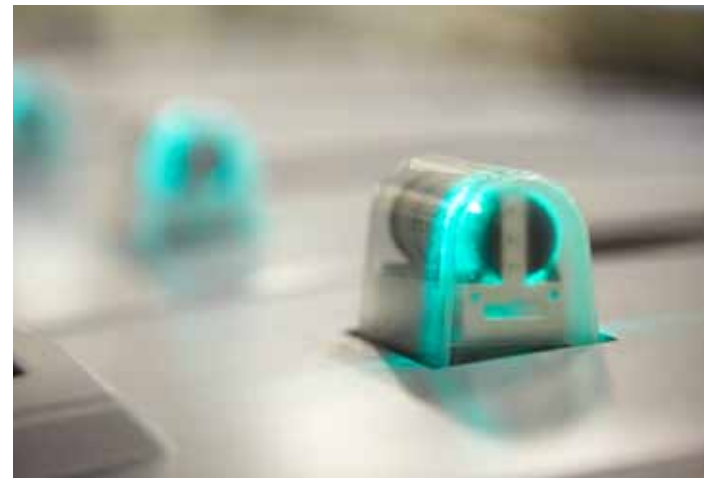
Strategic alliances with global suppliers allow us to provide our customers with competitive terms for components.

New Product Introduction

Hapro is one of the leading companies in the production of prototypes and industrialisation. Our NPI department can act as your partner throughout the entire process – from concept to finished product.

For projects, we set up a specialised team which has full responsibility for the introduction process and for providing our customers with a short time-to-market for their products.

The NPI department works in close cooperation with our highly experienced process and technology team.



- From concept to finished product
- Dedicated project team
- Prototype experts
- Component specialists
- Design for Excellence
- Test development

Design for Excellence

NPI can conduct a design analysis of your products prior to production in order to "Get it right first time".

Prototyping

As a result of many years of experience, we are familiar the challenges involved in bringing a new product onto the market. We work closely with our customers and each project has a dedicated project manager. Our employees are trained experts in prototype assembly.

NPI has a dedicated logistics team of

component and PCB specialists who provide a fast and efficient supply of components.

Test Development

Hapro has the expertise to design and develop a full test strategy to assist our customers in achieving optimal test solutions.

Our highly experienced test engineers use cutting edge test tools and technologies. Hapro is an Authorised JTAG Application Provider and we use National Instruments' LabVIEW and TestStand as test platforms. We use WATS to collect and organise test data.

State-of-the-art assembly

Hapro offers state-of-the-art assembly facilities. Our high level of investment means that we can offer the very latest in assembly and inspection technology.

Assembly

Hapro utilises world class equipment to achieve consistently high levels of yield

and process control. Our equipment provides integrated features such as process monitoring and control in order to optimise SMT production.

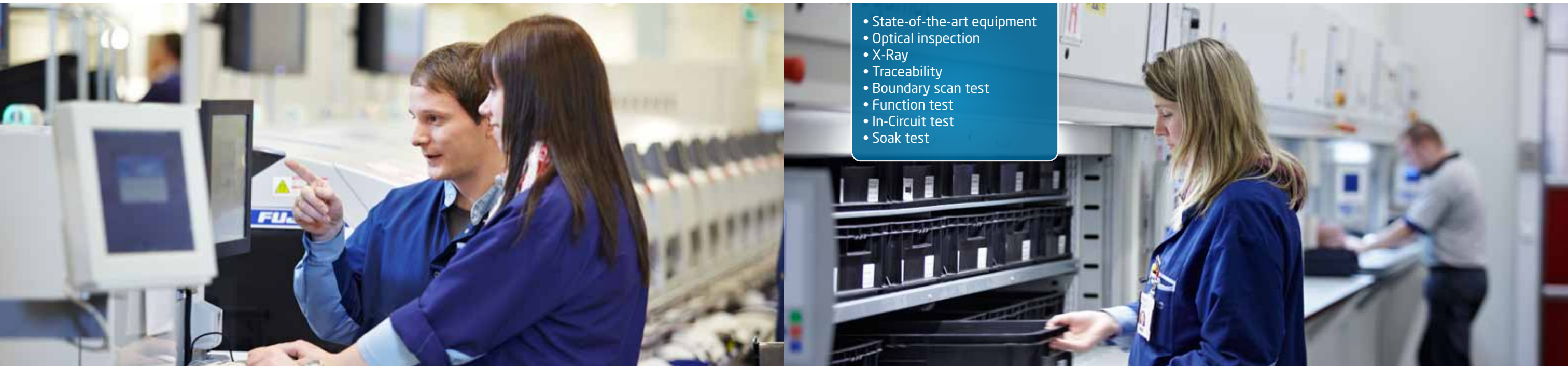
Our assembly department has equipment for 2D laser code marking, solder paste

inspection, optical inspection, X-Ray, and wave and selective soldering.

We have a sophisticated system for traceability as well as controlled-environment storage of moisture-sensitive components.

Testing

Hapro conducts testing at various stages in the production process. We are able to provide advanced testing and diagnostic techniques.

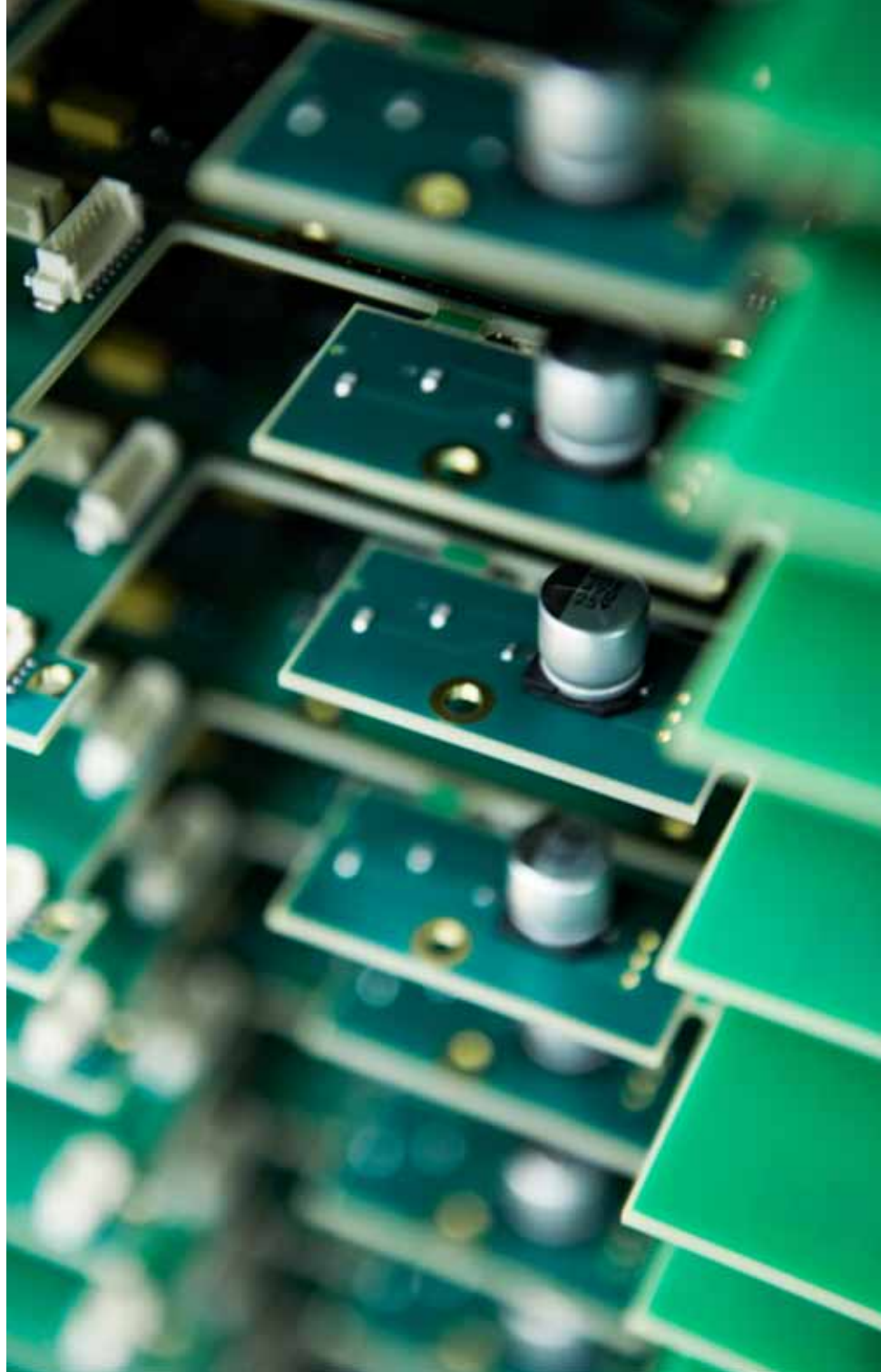


Our service does not stop at the factory gates

The Hapro service department has skilled engineers that can service products marketed by our customers. Failure analysis is performed to determine root cause and in order to identify corrective actions required to prevent recurrence.

Product distribution

Our proximity to Oslo Airport means that we are able to provide effective and rapid on-time product delivery. We also look after transportation and custom documentation for global distribution as part of our daily routine.



hapro.

Mohagasvingen 8, 2770 Jaren

Phone: + 47 61 33 95 00

Mail: post@hapro.no

www.hapro.no